

Courtesy Rules

- ◆ Reservations (pick up and drop off) must be made through the dispatcher.
- ◆ Please be ready when the bus arrives as the driver can wait no longer than two minutes.
- ◆ No smoking, eating or drinking is allowed while on board.
- ◆ The driver is not permitted to enter your home.
- ◆ If service is no longer needed, please call the dispatcher to cancel your ride.
- ◆ Wheelchairs and mobility chairs must be equipped with working and locking brakes.
- ◆ Passengers must wear seat belts at all times.
- ◆ Only trained service animals are permitted.
- ◆ A maximum of three shopping bags is allowed.
- ◆ The driver is not responsible for items left on the bus.



All buses are wheelchair accessible.



A Service of Madera County

Operated by:



MV Transportation, Inc.

MCC Administration Office
201 W. Almond Avenue
Madera, CA 93637
July 2024



Eastern Madera County SENIOR BUS



For Reservations Call
(559) 263-8080

www.mcctransit.com

What is the Eastern Madera County Senior Bus?

The Senior Bus is a dedicated transportation service for seniors aged 60 and above as well as qualified individuals with disabilities in Eastern Madera County. The service is designed to provide transportation to medical appointments, senior centers, nutrition programs and local businesses in Eastern Madera County. The bus is equipped with a wheelchair lift and handrails for safety and convenience.

Who Can Ride?

Anyone aged 60 and older, as well as qualified individuals with disabilities, are welcome to ride the Senior Bus. To get started, just follow our simple application process explained below.

Application Process:

You can get an application directly from our driver; go online to the Madera County Connection website at mcctransit.com, or you can pick one up in person at our Administration Office, located at 201 West Almond Avenue in Madera.

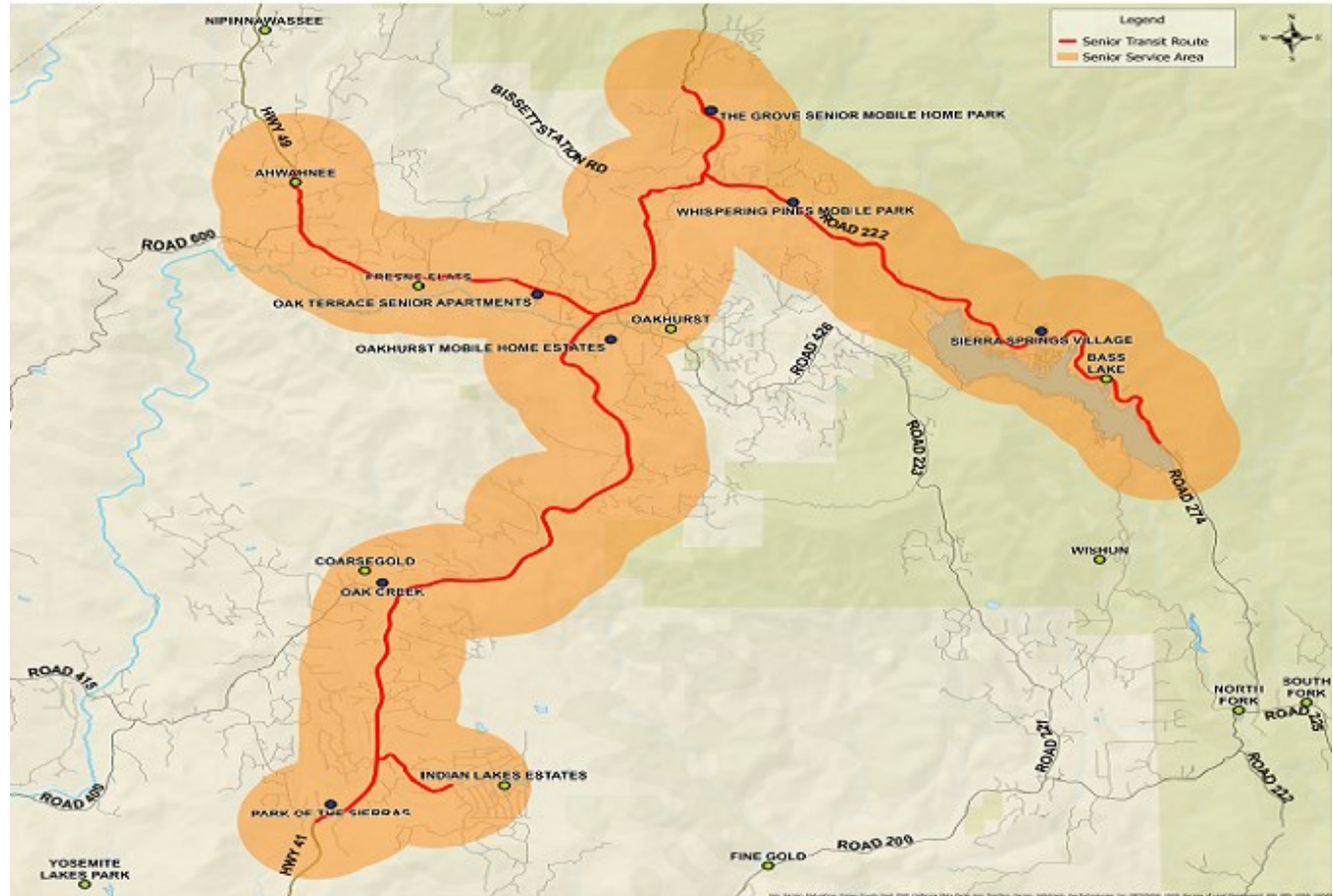
How Can I Get a Ride?

To make a reservation, call the dispatcher at (559) 263-8080. Reservation hours are 8:00a.m. – 5:00p.m., Monday through Sunday. Reservations can be made until 5:00p.m. the day before you need transportation.

There may be times when the driver must cancel your ride due to adverse weather conditions. Passengers who are scheduled to ride will be contacted as soon as the cancellation is determined.



SENIOR BUS SERVICE



Monday - Friday

9:00 a.m. – 4:00 p.m.
(No service Saturday and Sunday)

No Service Holidays

- New Year's Day
- Memorial Day
- Fourth of July
- Labor Day
- Thanksgiving Day
- Christmas Day

One-Way: \$1.50 per person

Round Trip: \$3.00 per person